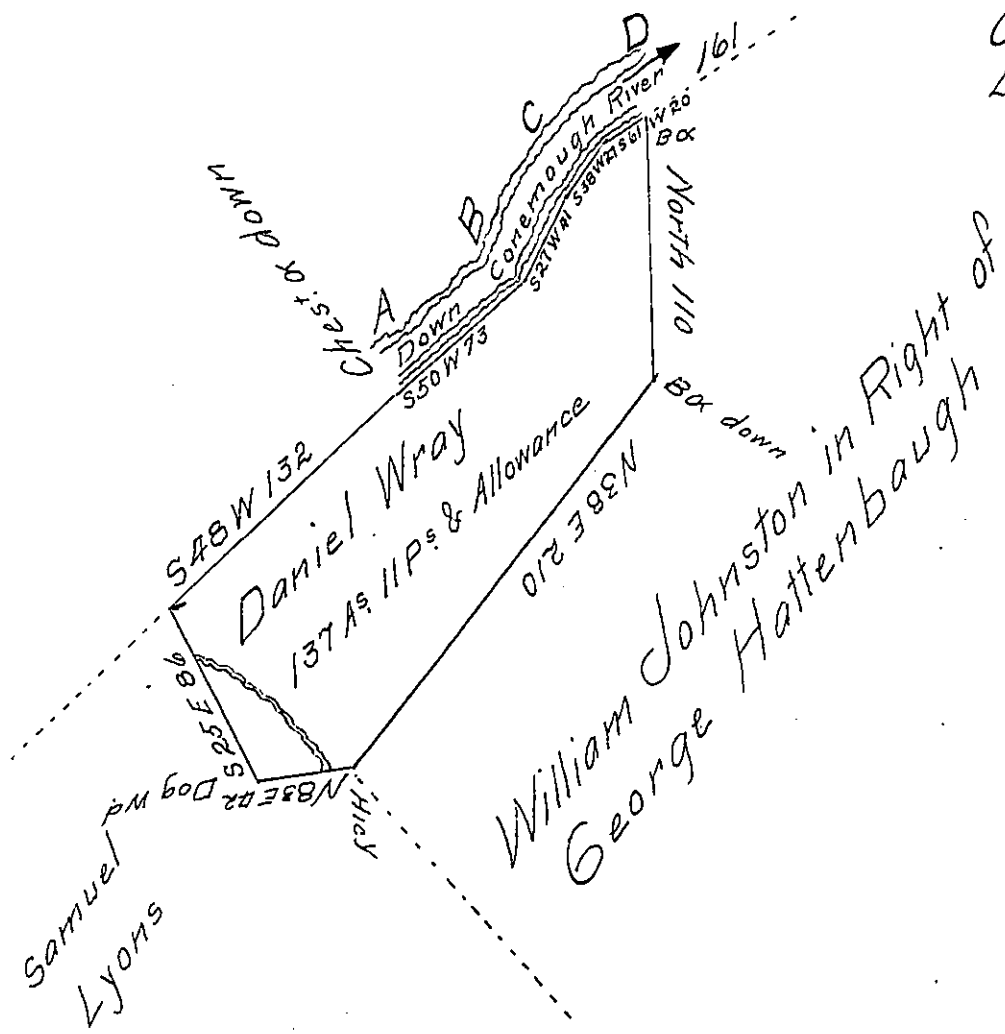


Course and distance down the  
Conemaugh River

A	S	50	W	73
B	S	27	W	41
C	S	38	W	27
D	S	61	W	20
				161



Surveyed to Daniel Wray on the 19<sup>th</sup> day of June 1775  
the above described tract of one hundred and thirty seven  
acres Eleven perches and allowe of Six per Cent &c.  
Situate on the north side of Conemaugh River above and  
adjoining a survey made for George Hattenbaugh in  
Conemaugh Township now Indiana County by Warrant of the  
6<sup>th</sup> of March 1775.

N. B. the above described tract was surveyed at the above  
mentioned time but was not Returned untill now that I have  
Examined the tines on the 30<sup>th</sup> of December 1813. and  
have Returned it

To Richard T. Leech Esquire } Alexr Taylor D. S.  
Surveyor General }

IN TESTIMONY that the above is a copy of the original remaining on file in  
the Department of Internal Affairs of Pennsylvania, made  
comformably to an Act of Assembly approved the 16<sup>th</sup> day of  
February 1833, I have hereunto set my hand and caused  
the Seal of said Department to be affixed at Harrisburg,  
this 16<sup>th</sup> day of December 1907

*Henry Howard*  
Secretary of Internal Affairs.